



Chenabore RC Hammer

Available in sizes 400, 450 and 500

Chenalord
drilling supplies





Chenabore RC Hammers

Reverse Circulation (centre sample recovery/ dual wall drilling) has been in use for many years in Canada and the US. RC drilling utilises a twin wall pipe system where the air travels down the outer tube to the face of the drill bit and returns up the centre along with the drilling cuttings cut by the drill bit. The sample is then passed through a series of diverters into a cyclone collector for sample collection. R C Hammers are used in mineral exploration, site investigation, and underground water determination.

In the right formation and depth RC drilling is considerably faster than core drilling because it eliminates the problems that water can cause with coring and eliminates the time spent recovering core barrel samples to the surface as they are instant even through broken or fractured ground. RC drilling is cheaper than diamond core drilling making it the most viable option when it comes to mineral exploration and site investigation.

RC drilling allows the determination of water quality and yield much easier thus allowing the job to be completed a lot faster than conventional drilling.

Chenalord has produced the standard and RC hammers since 1992. Over this period using our superior engineering and knowledge and expertise in both the drilling industry and manufacturing we have made significant modifications to improve the overall performance with outstanding results. Chenabore RC hammers have a reputation for performance and quality. The Chenabore RC 400, 450 and RC 500 offer the following which is unrivalled:

- Manufactured using high grade metals and heat treated for long life and performance
- Carburised pistons
- Locking key shrouds
- Additional air lift tubes
- Option to fit back reamer subs
- Highly cost efficient and good value

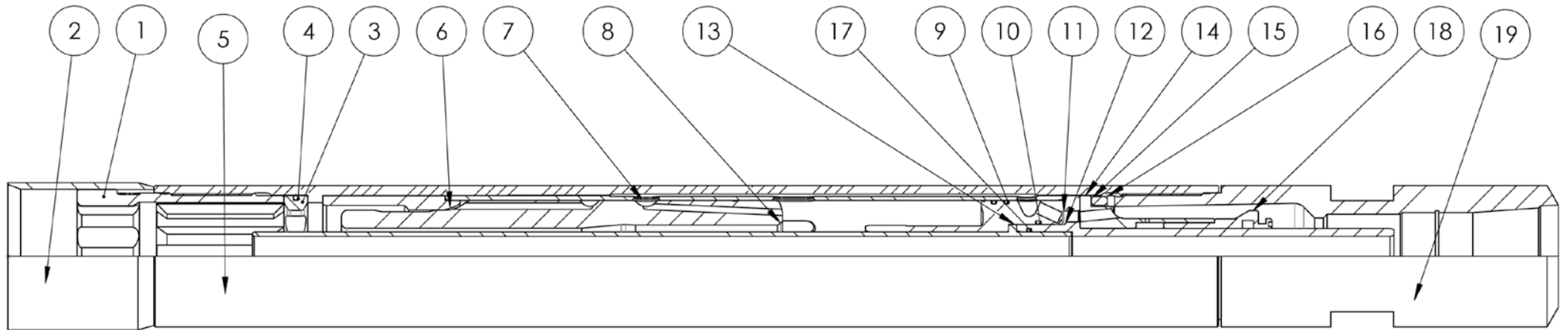
Our RC hammers are used worldwide on a range of drilling machines in varied geological formations. They are preferred on site by operators and geologists for the following characteristics:

- High percentage of uncontaminated good size samples
- Fast penetration rate
- Maximum material recovery, up to 98%
- Trouble free, long life performance
- Handles injection of water, foam and polymers without pressure loss
- Maximum drilling under water

Chenabore RC hammers are complimented by the following related products

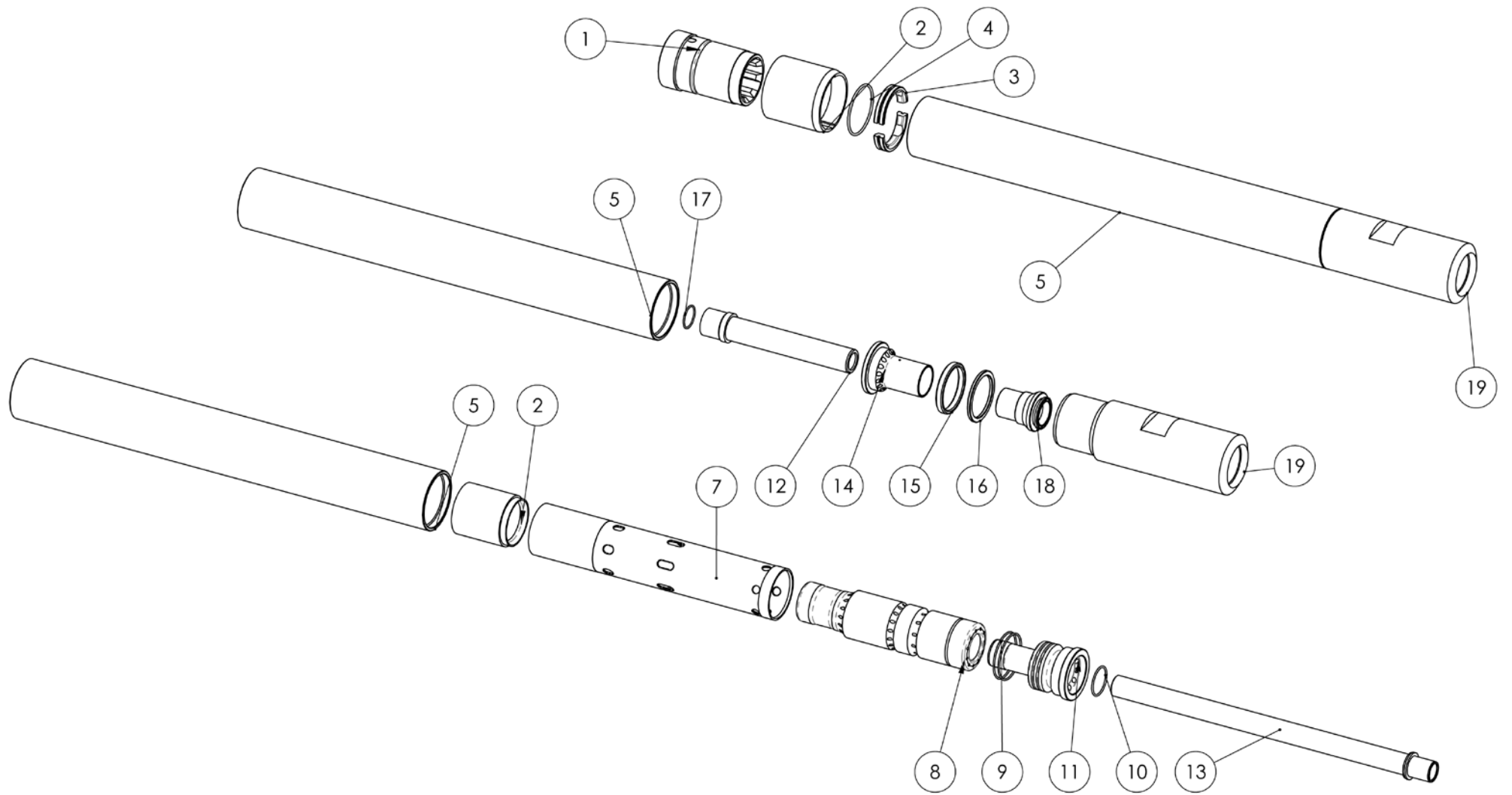
- RC Drill Rods
- RC Drill Bits
- Cyclone Units
- Air Swivels and Adaptors
- Adaptor Subs
- Back Reamers





Chenabore RC Hammer Parts

Item No.	Description	400 Part No.	450 Part No.	500 Part No.	Quantity
1	CHUCK	CBRC401	CBRC4501	CBRC501	1
2	SHROUD	CBRC402	CBRC4502	CBRC502	1
3	BIT RETAINING RINGS	CBRC403	CBRC4503	CBRC503	1
4	O-RING (BIT RETAINING RINGS)	CBRC404	CBRC4504	CBRC504	1
5	WEARSLEEVE	CBRC405	CBRC4505	CBRC505	1
6	CHUCK BUSH	CBRC406	CBRC4506	CBRC506	1
7	INNER SLEEVE	CBRC407	CBRC4507	CBRC507	1
8	PISTON	CBRC408	CBRC4508	CBRC508	1
9	O-RING (AIR DISTRIBUTOR OUTER) - REF236	CBRC409A	CBRC4509A	CBRC509A	2
10	O-RING (AIR DISTRIBUTOR INNER)	CBRC409B	CBRC4509B	CBRC509B	1
11	AIR DISTRIBUTOR	CBRC410	CBRC4510	CBRC510	1
12	SAMPLE TUBE TOP	CBRC411	CBRC4511	CBRC511	1
13	SAMPLE TUBE BOTTOM	CBRC412	CBRC4512	CBRC512	1
14	NRV HOUSING	CBRC413	CBRC4513	CBRC513	1
15	MAKE UP RING - NEOPRENE	CBRC414	CBRC4514	CBRC514	1
16	MAKE UP RING - METAL	CBRC415	CBRC4515	CBRC515	1
17	O-RING (SAMPLE TUBE)	CBRC416	CBRC4516	CBRC516	1
18	NRV VALVE	CBRC417	CBRC4517	CBRC517	1
19	BACKHEAD	CBRC418	CBRC4518	CBRC518	1
	N.R.V SPRING	CBRC419	CBRC4519	CBRC519	1
	N.R.V SEAL	CBRC420	CBRC4520	CBRC520	1
	LOCKING KEYS	CBRC421	CBRC4521	CBRC521	2



Chenabore RC Specifications

Item	Chenabore RC 400	Chenabore RC 450	Chenabore RC 500
Features			
	Increased size of chip sample recovered	Increased size of chip sample recovered	Increased size of chip sample recovered
	No cross contamination of samples	No cross contamination of samples	No cross contamination of samples
	Good characteristics underwater	Good characteristics underwater	Good characteristics underwater
			Up to 98% sample recovered
Specifications			
Hole Sizes	117mm (4.5/8") to 120mm (4.3/4")	124mm (4.7/8") to 137mm (5.3/8")	130mm (5.1/8") to 140mm (5.1/2")
Overall Length	1161mm (45.7") less Bit	1161mm (45.7") less Bit	1161mm (45.5") (Less Bit)
Outside Diameter	112mm (4.40")	116mm (4.56")	124mm (4.7/8")
Weight	56.8 kgs (125 lbs) less bit	56 kgs (123 lbs) less bit	56.8kgs (135lbs) (Less Bit)
Drill Bit Shank	'400' Reverse Circulation	'425' Reverse Circulation	'475' Reverse Circulation
Across flats	89 mm (3.5")	89 mm (3.5")	89mm (3.5")
Air Consumption			
10.55 Kg/CM ²	6.37 M ³ /Min	7.07 M ³ /Min	-
150 P.S.I.	225 CFM	250 CFM	325 CFM
14.0 Kg/CM ²	9.34 M ³ /Min	10.19 M ³ /Min	-
200 P.S.I.	330 CFM	360 CFM	430 CFM
17.58 Kg/CM ²	11.32 M ³ /Min	12.74 M ³ /Min	-
250 P.S.I.	400 CFM	450 CFM	500 CFM
21.09 Kg/CM ²	14.43 M ³ /Min	15.85 M ³ /Min	-
300 P.S.I.	510 CFM	560 CFM	610 CFM
24.61 Kg/CM ²	17.70 M ³ /Min	18.40 M ³ /Min	-
350 P.S.I.	625 CFM	650 CFM	725 CFM
Lubrication			
	1.5 to 2.0 litres per hour	1.6 to 2.2 litres per hour	
	Winter - 30 grade	Winter - 30 grade	
	Summer - 50 grade	Summer - 50 grade	

Chenabore RC Hammer

Available in sizes 400, 450 and 500



Unit 3, Turnoaks Industrial Estate, Burley Close, off Storforth Lane, Birdholme, Chesterfield S40 2HA

T +44 (0)1246 208745

F +44 (0)1246 277227

E enquiries@chenalord.co.uk

W www.chenalord.com